



TMAX ROLL UPS

01-02	Exterior Shades
03	Natte Colors
04	TuffScreen Info
05	Interior Shades
06	*NEW* Neolux Interior Shade
07	Shutters
08	Garage Doors
09	Wifi Hubs
10-11	Form

Table of CONTENTS



Exterior SHADES



For our motorized Exterior Shades, we use a Fiberglass Mermet Natte Fabric and offer 3%, 5% and 10% openness as well as blackout fabric and bug screen options. We partnered with Heroal in Germany and use a powder coated Heroal hardware system (aka rails, housing box), and we offer 4 different colors to choose from. The exterior shades can either be hardwired or plugged into an outlet. Our exterior shades have a 10 year warranty on fabric, 5 year warranty on motor, and 2 year on the entire system. All of our systems come with remotes, and multiple shades can be operated on their own channel and all simultaneously. We also offer a WiFi Hub for an additional cost, which allows you to control the shades remotely, put them on timers, connect to Alexa and Google, etc. through a smartphone app.



DROP *Shades*

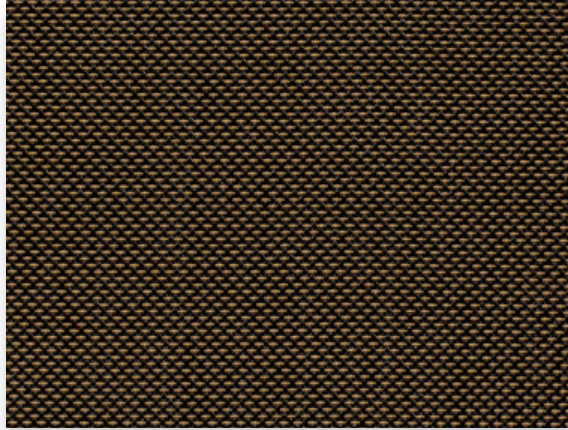
The Drop Shades are a bit cheaper and will not completely seal the patio from bugs, and will not be able to increase or decrease the temperature as much, but are a great option if your only goal is to hide the majority of the sun! The drop shades can handle about 10-20mph winds.



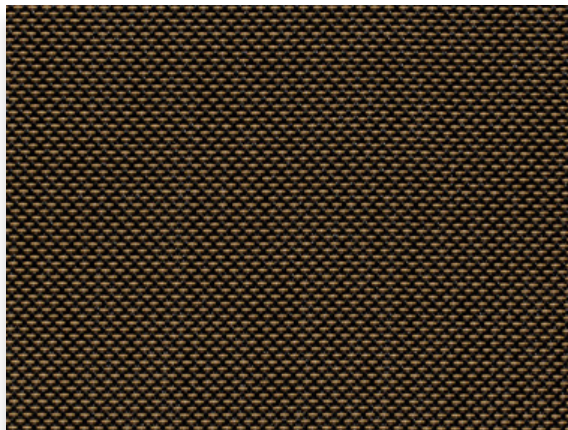
2023

Natté™

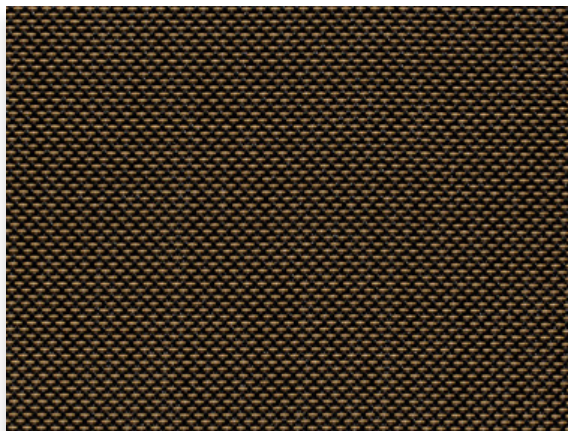
Outdoor Solar Screen | 3% 5% 10% openness



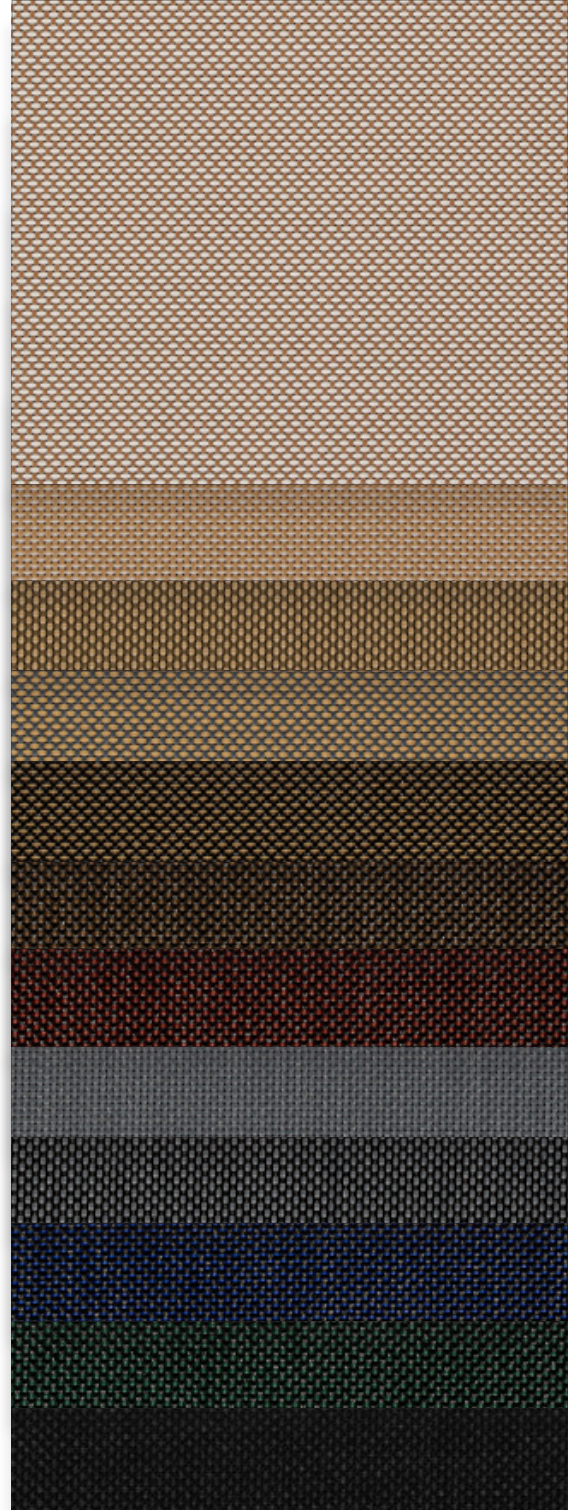
3% 30M687 | Charcoal/Cocoa-Fawn



5% 30M687 | Charcoal/Cocoa-Fawn



10% 30M687 | Charcoal/Cocoa-Fawn



910902
Sable/White

10M127
Sable/Sable-Fog

910988
Sable/Wood

901910
Grey/Sable

30M687
Charcoal/
Cocoa-Fawn

930961
Charcoal/Cocoa

930992
Charcoal/Gar net

901901
Grey/Grey

901930
Grey/Charcoal

30M394
Charcoal/
Charcoal-Navy

930993
Charcoal/Forest

930930
Charcoal/
Charcoal

Fabrics sampled on waterfall are 5% openness.

TMAX®
Roll Ups



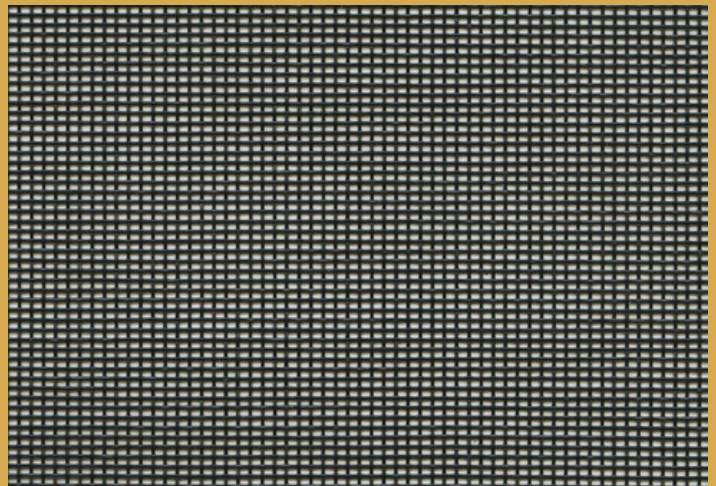
TuffScreen® No-See-Um

BY PHIIFER

TuffScreen® No-See-Um is a durable, tightly woven, vinyl-coated polyester designed to stop small insects while offering good daytime privacy. Suitable for retractable systems and ideal for use in patios, porches, windows and doors.



Black



Phifer heavy-duty screen is durable, vinyl-coated polyester insect screening, ideal for use in high-traffic areas. TuffScreen No-See-Um is a tightly woven screen designed to stop small insects, and is suitable for retractable systems, and ideal for use in patios, porches, pool enclosures, windows and doors. TuffScreen is stronger than traditional insect screening, and is an excellent choice for patios, porch enclosures, retractable systems, windows and doors.

Microban® antimicrobial protection inhibits the growth of stain-causing bacteria, mold and mildew on the screen.

Interior SHADES

Our custom interior shade motors are battery powered and need charged once every 2 years or so. We manufacture, cut, and assemble all of our products in our warehouse here in Houston. The remotes are also battery powered and we can also include a WiFi Hub for an additional \$250 to control the shades via app.



Our company offers a wide range of fabric samples for customers to choose from. To make it easier for our clients to access these samples, we have created a QR code that provides access to all of our fabric options. This code can be scanned using a smartphone or other device with a camera, allowing customers to view the available fabrics and select the ones that best meet their needs.



Neolux DUAL SHADES



- Over 40 colors
- Dim out & Blackout privacy options
- Contemporary, natural designs

SCAN



Color Options



NEW

SHUTTERS

Residential + Commercial Applications



Our shutters are motorized, remote controlled and can be either hardwired or plugged into a standard 120v outlet. Depending on material, they can come insulated or not, but all have a powder coat finish. The insulation provides energy efficiency, and the shutters are great for storm protection, security, and wind and noise reduction. The shutters are about \$35-\$40 per sq/ft plus motor. They come standard with motor, remotes, bumper sensors, infrared safety sensors, and manual overrides, and 1 override crank handle to open manually/close the door if power goes out. If you do not need safety sensors, we do not have to include them.



Garage DOORS

Our European style roller doors are R-5 insulated with a powder coat finish. They come standard with motor, remotes, bumper sensors, infrared safety sensors, and manual overrides, and 1 override crank handle to open manually/close the door if power goes out. If you do not need safety sensors, we do not have to include them. Our doors are also compatible with Homelink. Also, you want to make sure there is aprox. 16" of header space available for the 12" housing unit and 3.5" Base Slat (shown in spec sheet). Power is standard 120v and can go on the left or right side.

We use a Stainless Steel Tubular motor, and each door comes standard with 1 handheld remote, 1 wall mount remote, and 1 keychain. Multiple doors come standard with 1 keychain per door, 1 multi channel wall remote, and 1 multi channel handheld remote (i.e if you order 3 doors, you would get 1 multi wall mount, 1 multi handheld, and 3 single channel keychains).



Wifi HUBS

DOOYA HOME AUTOMATION SMART HUB \$200



- One Hub can connect to 30 motors
- One account can include 5 different locations
- Each location can control 5 Hubs
- Each account can have up to 3 guest per account



Download the "CONNECTOR" App!

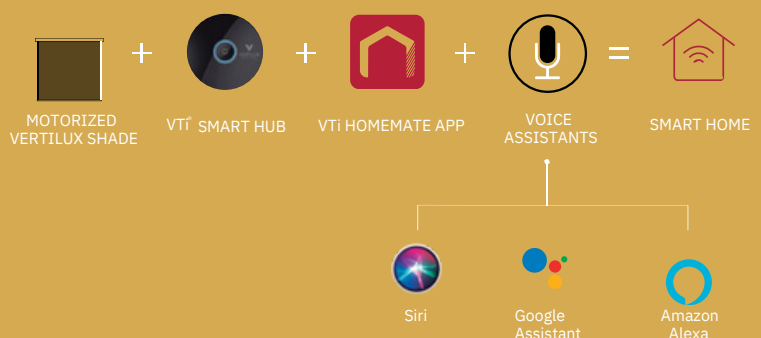
Available in the GOOGLE PLAY and APP STORE
"Motor That Talks Back"

ALEXA & GOOGLE HOME Both Compatible with Dooya Smart Hub

VTi® Smart HUB \$200



- Control your VTi® Celtic Motorized Roller Shades from your smartphone no matter where you are.
- Integrate and control all your RF and IR devices (ceiling fans, air conditioning, tv, and more) with the VTi HomeMate App.
- Remote access to your connected tablet or smartphone.
- Set timers, schedules and scenes for a more comfortable experience.
- Link other compatible VTi® accesories for a full automation experience.
- Control your devices via Amazon Alexa, the Google Assistant or Siri.



ORDER FORM



☐ PICK UP ORDER ☐ SHIPPED ORDER

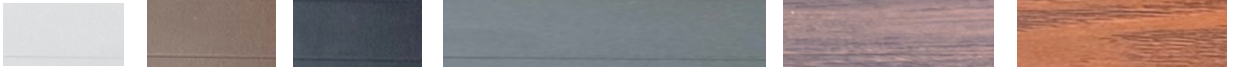
NAME: _____ PHONE# _____

BILLING ADDRESS: _____

SHIPPING ADDRESS: _____

BEING SHIPPED TO A BUSINESS? IF YES, PROVIDE BUSINESS NAME _____

SLAT COLOR:



RAIL/HOUSING COLOR: WHITE BROWN BLACK BRONZE

Power Side: Left/Right _____

Infrared Sensors? Yes/No _____

Bumper Sensor? Yes/No _____

Manual Override? Yes/No _____

~~REMOTES WANTED: (Enter # Quantity)~~

Single Channel Handheld Remote: _____

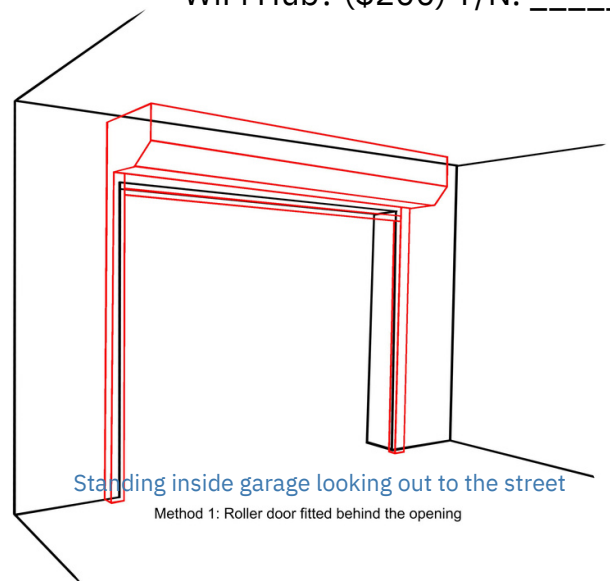
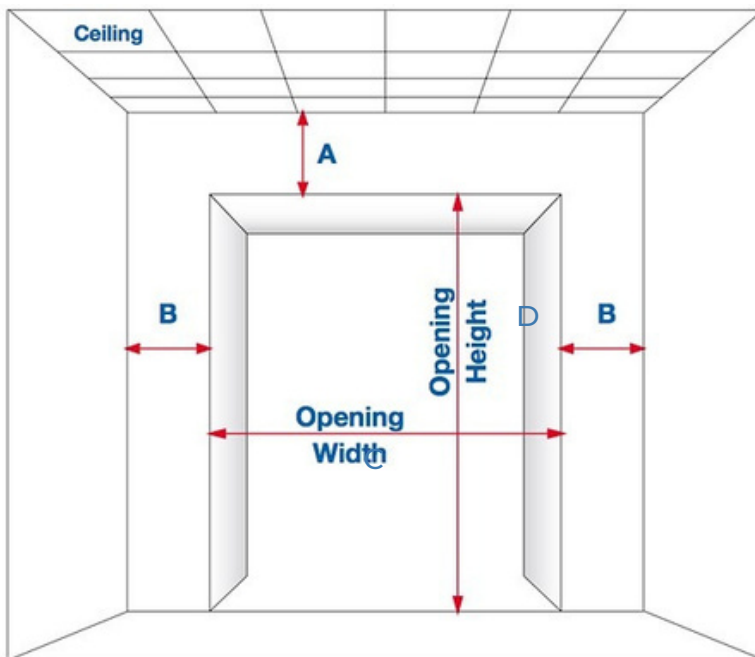
Single Channel Wall Mount Remote: _____

Single Channel Waterproof Keychain: _____

Multi Channel Handheld Remote: _____

Multi Channel Wall Mount Remote: _____

WiFi Hub? (\$200) Y/N: _____



A. Headroom requires at least 15.5" to clear the 12" housing & 3.5" base slat _____ in.

B. Side room requires at least 3.75" _____ in.

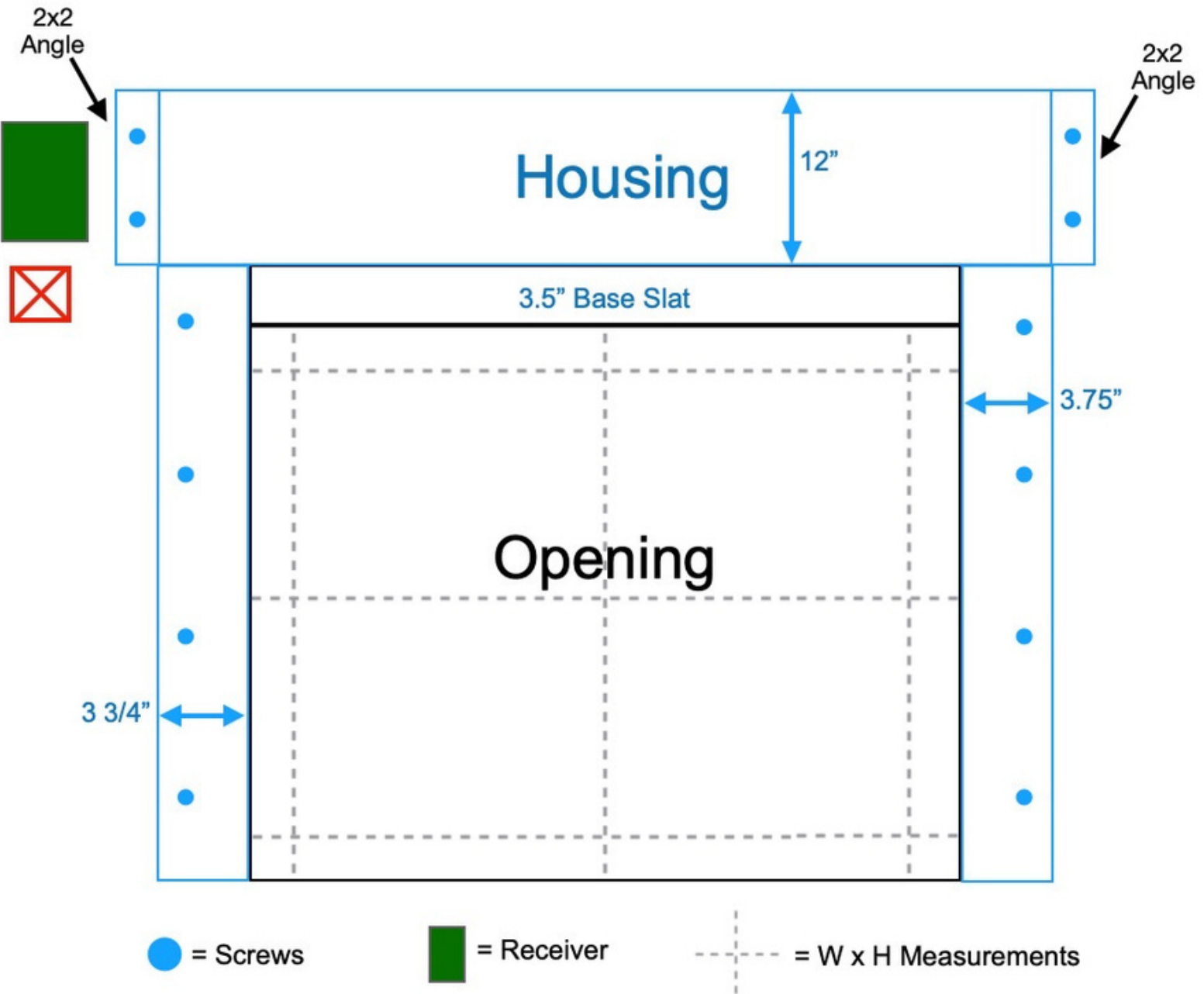
C. Door Opening Width: _____ in.

D. Door Opening Height: _____ in.

C & D is your finished opening size and the exact size your door will be. Measure for variances throughout the opening. If you want to be sure the rails clear the opening from the outside view, you can add to your width, considering you have the available space.

*Single door orders come standard with 1 Single Wall, 1 Single Handheld & 1 Keychain.

Multi door orders come standard with 1 Multi Wall, 1 Multi Handheld, and 1 keychain per door*



⊗ = Best spot for outlet 5" over, 1" up from opening

Blue = Garage Door Frame

Black = Opening

Rails = 3.75"

Housing = 12"

Base Slat = 3.5" / 3.125" slat with 3/8" rubber weatherstop

Preferred Head Room = 15.5"

NOTE:

- We send product pre-drilled & with necessary screws
- We need 3 width x height measurements on the opening
- The power can be installed on either the right or left



let's get in touch

3510 E TC Jester Blvd Houston, TX 77018
+1 (713) 772-9988
www.TMAXRollUps.com
Info@tmaxrollups.com