



# TMAX ROLL UPS

01-03	Exterior Shades + Hardware Colors
04	Natte Colors
05	TuffScreen Info
06	Interior Shades
07	*NEW* Neolux Interior Shade
08	Shutters
09-10	Garage Doors
11-12	Wifi Hubs
13	TMAX Keypad
14-16	Forms / Measuring

---

*Table of*  
**CONTENTS**





# Exterior SHADES



For our motorized Exterior Shades, we use a Fiberglass Mermet Natte Fabric and offer 3%, 5% and 10% openness as well as blackout fabric and bug screen options. We partnered with Heroal in Germany and use a powder coated Heroal hardware system (aka rails, housing box), and we offer 4 different colors to choose from. The exterior shades can either be hardwired or plugged into an outlet. Our exterior shades have a 10 year warranty on fabric, 5 year warranty on motor, and 2 year on the entire system. All of our systems come with remotes, and multiple shades can be operated on their own channel and all simultaneously. We also offer a WiFi Hub for an additional cost, which allows you to control the shades remotely, put them on timers, connect to Alexa and Google, etc. through a smartphone app.



# Hardware COLORS

Rails, housing and side caps!



Raw Material



Bronze  
Matte Finish



White  
Glossy Finish



Beige  
Glossy Finish



\*Powder Coating is available  
upon request\*





# DROP *Shades*

The Drop Shades are a bit cheaper and will not completely seal the patio from bugs, and will not be able to increase or decrease the temperature as much, but are a great option if your only goal is to hide the majority of the sun! The drop shades can handle about 10-20mph winds.

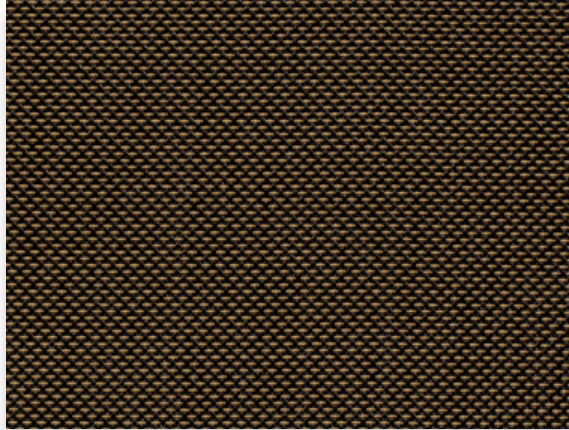




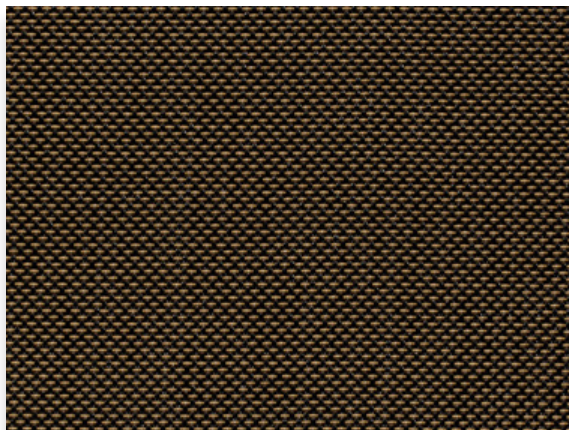
2023

# Natté™

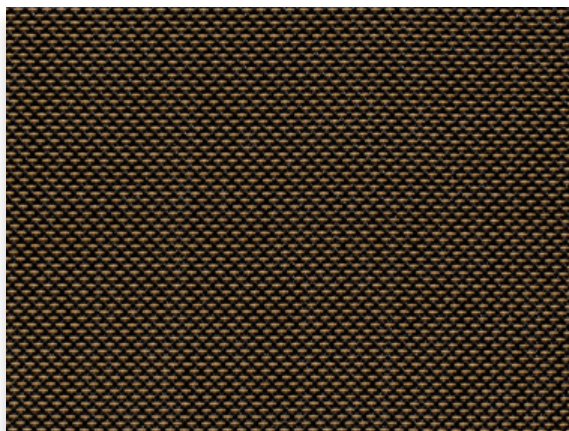
Outdoor Solar Screen | 3% 5% 10% openness



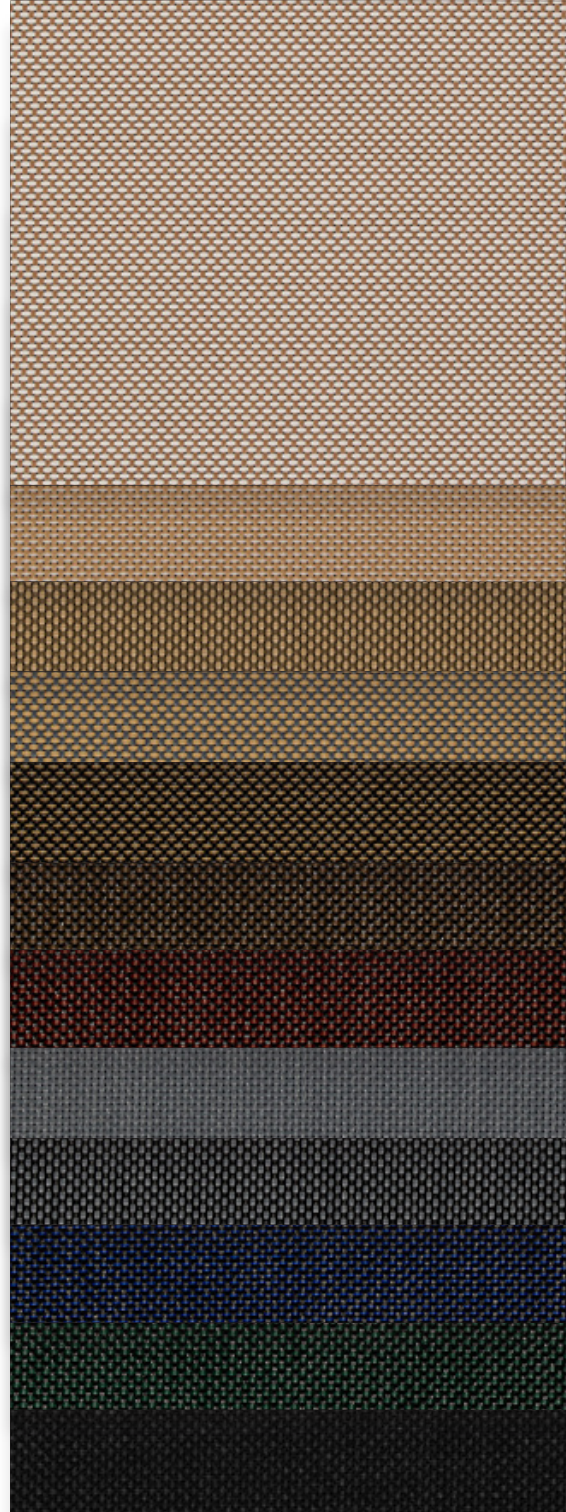
3% 30M687 | Charcoal/Cocoa-Fawn



5% 30M687 | Charcoal/Cocoa-Fawn



10% 30M687 | Charcoal/Cocoa-Fawn



910902  
Sable/White

10M127  
Sable/Sable-Fog

910988  
Sable/Wood

901910  
Grey/Sable

30M687  
Charcoal/  
Cocoa-Fawn

930961  
Charcoal/Cocoa

930992  
Charcoal/Gar net

901901  
Grey/Grey

901930  
Grey/Charcoal

30M394  
Charcoal/  
Charcoal-Navy

930993  
Charcoal/Forest

930930  
Charcoal/  
Charcoal

Fabrics sampled on waterfall are 5% openness.





# BUG *Screen Shades*



## TuffScreen® No-See-Um

BY PHIFER

TuffScreen® No-See-Um is a durable, tightly woven, vinyl-coated polyester designed to stop small insects while offering good daytime privacy. Suitable for retractable systems and ideal for use in patios, porches, windows and doors.



Black



Phifer heavy-duty screen is durable, vinyl-coated polyester insect screening, ideal for use in high-traffic areas. TuffScreen No-See-Um is a tightly woven screen designed to stop small insects, and is suitable for retractable systems, and ideal for use in patios, porches, pool enclosures, windows and doors. TuffScreen is stronger than traditional insect screening, and is an excellent choice for patios, porch enclosures, retractable systems, windows and doors.

Microban® antimicrobial protection inhibits the growth of stain-causing bacteria, mold and mildew on the screen.

# Interior SHADES

---

Our custom interior shade motors are battery powered and need charged once every 2 years or so. We manufacture, cut, and assemble all of our products in our warehouse here in Houston. The remotes are also battery powered and we can also include a WiFi Hub for an additional \$250 to control the shades via app.



---

Our company offers a wide range of fabric samples for customers to choose from. To make it easier for our clients to access these samples, we have created a QR code that provides access to all of our fabric options. This code can be scanned using a smartphone or other device with a camera, allowing customers to view the available fabrics and select the ones that best meet their needs.





# Neolux DUAL SHADES



- Over 40 colors
- Dim out & Blackout privacy options
- Contemporary, natural designs

SCAN



Color Options



NEW

# SHUTTERS

## *Residential + Commercial Applications*



Our shutters are motorized, remote controlled and can be either hardwired or plugged into a standard 120v outlet. Depending on material, they can come insulated or not, but all have a powder coat finish. The insulation provides energy efficiency, and the shutters are great for storm protection, security, and wind and noise reduction. The shutters are about \$35-\$40 per sq/ft plus motor. They come standard with motor, remotes, bumper sensors, infrared safety sensors, and manual overrides, and 1 override crank handle to open manually/close the door if power goes out. If you do not need safety sensors, we do not have to include them.





# Garage DOORS

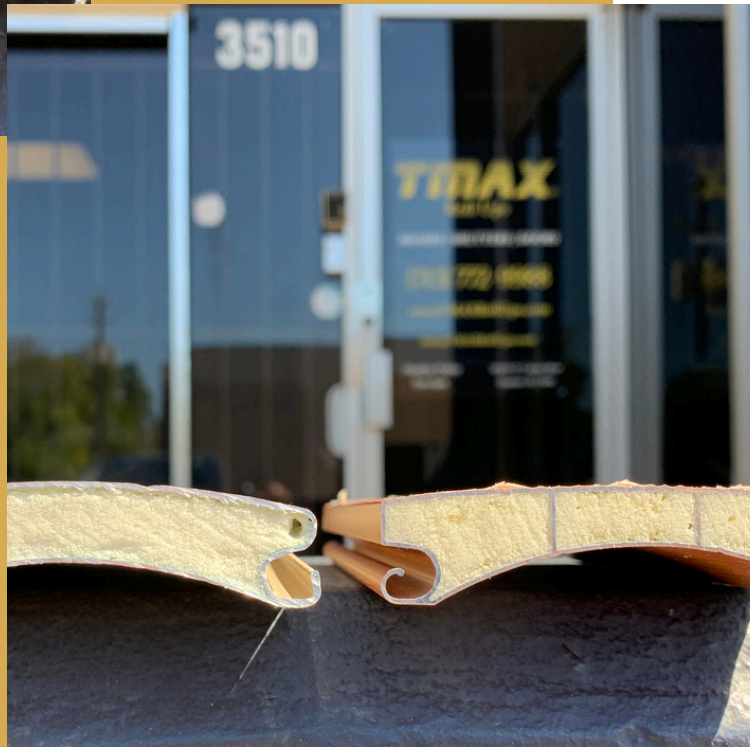
Our European style roller doors are R-5 insulated with a powder coat finish. They come standard with motor, remotes, bumper sensors, infrared safety sensors, and manual overrides, and 1 override crank handle to open manually/close the door if power goes out. If you do not need safety sensors, we do not have to include them. Our doors are also compatible with Homelink. Also, you want to make sure there is approx. 16" of header space available for the 12" housing unit and 3.5" Base Slat (shown in spec sheet). Power is standard 120v and can go on the left or right side.

We use a Stainless Steel Tubular motor, and each door comes standard with 1 handheld remote, 1 wall mount remote, and 1 keychain. Multiple doors come standard with 1 keychain per door, 1 multi channel wall remote, and 1 multi channel handheld remote (i.e if you order 3 doors, you would get 1 multi wall mount, 1 multi handheld, and 3 single channel keychains).



Our door and shutters material are insulated!

*Garage*  
**DOORS**



\*We also offer non-insulated option\*





# Wifi HUBS

## DOOYA HOME AUTOMATION SMART HUB \$200



- One Hub can connect to 30 motors
- One account can include 5 different locations
- Each location can control 5 Hubs
- Each account can have up to 3 guest per account



Download the "CONNECTOR" App!

Available in the GOOGLE PLAY and APP STORE  
"Motor That Talks Back"

ALEXA & GOOGLE HOME Both Compatible with Dooya Smart Hub

## VTi® Smart HUB \$200



- Effortless and User-Friendly Control Anytime  
Compatible with Unidirectional RE-LION motors. Easily manage your shades from anywhere, whether you're at home or on the go with a friendly App Control. Search for Vti Homemate+ app on Appstore and Google play.

- Seamless Scene, Routines and Timers  
Personalize your experience by designing custom scenes, and timers based on your location to facilitate efficient and automatic shade control. Tailor the settings based on specific weather conditions, or your daily schedule to enhance convenience and comfort. Timer Functionality includes automatic sunrise/sunset detection.

- Integration with 3rd party systems and voice Control

Effortless and native integration using straightforward voice commands via popular virtual assistants like Amazon Alexa and Google Assistant.

# Wifi HUBS

NEW  
*Vertilux*

## VTi® SMART HUB UNI | Vertilux Smart Interface for RE-LION



Download the  
VTi HomeMate+ App  
It's FREE!

- Effortless and User-Friendly Control Anytime
- Seamless Scene, Routines and Timers
- Integration with 3rd party systems and voice Control



Scan to Download  
the Programming  
Instructions



# Key PAD



## TMAX Keypads \$125

- Illuminated keys
- Weather-resistant
- Residential & Commercial use
- Practical and secure solution



# ORDER FORM



PICK UP ORDER     SHIPPED ORDER

NAME: \_\_\_\_\_ PHONE# \_\_\_\_\_

BILLING ADDRESS: \_\_\_\_\_

SHIPPING ADDRESS: \_\_\_\_\_

BEING SHIPPED TO A BUSINESS? IF YES, PROVIDE BUSINESS NAME \_\_\_\_\_

**SLAT COLOR:**



**RAIL/HOUSING COLOR:** WHITE BROWN BLACK BRONZE \_\_\_\_\_

REMOTES WANTED: (Enter # Quantity)

Single Channel Handheld Remote: \_\_\_\_\_

Single Channel Wall Mount Remote: \_\_\_\_\_

Single Channel Waterproof Keychain: \_\_\_\_\_

Multi Channel Handheld Remote: \_\_\_\_\_

Multi Channel Wall Mount Remote: \_\_\_\_\_

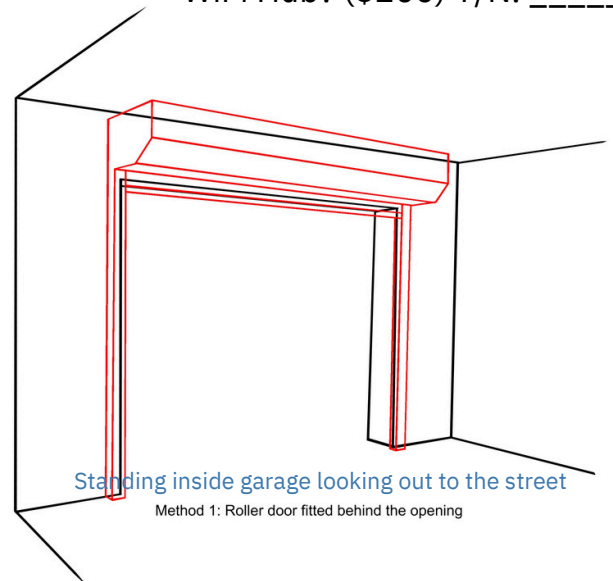
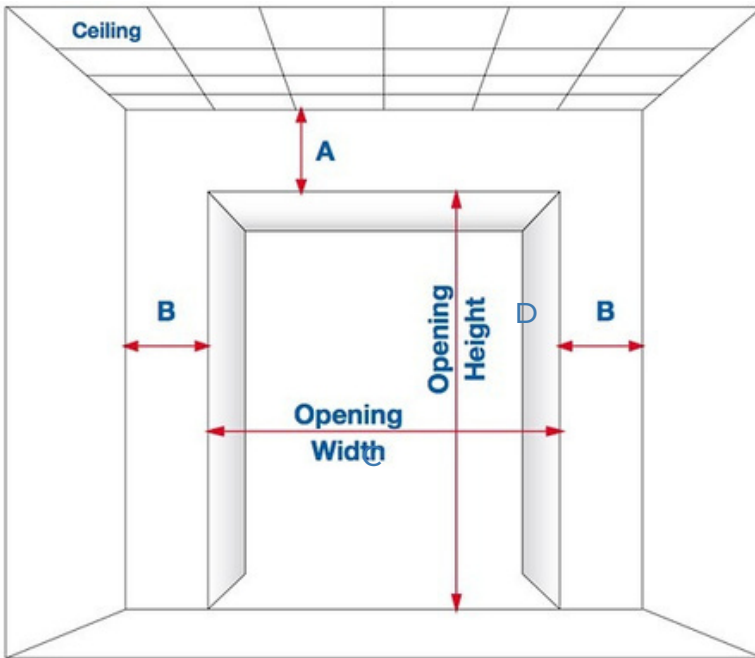
WiFi Hub? (\$200) Y/N: \_\_\_\_\_

Power Side: Left/Right \_\_\_\_\_

Infrared Sensors? Yes/No \_\_\_\_\_

Bumper Sensor? Yes/No \_\_\_\_\_

Manual Override? Yes/No \_\_\_\_\_



**A. Headroom requires at least 15.5" to clear the 12" housing & 3.5" base slat \_\_\_\_\_ in.**

**B. Side room requires at least 3.75" \_\_\_\_\_ in.**

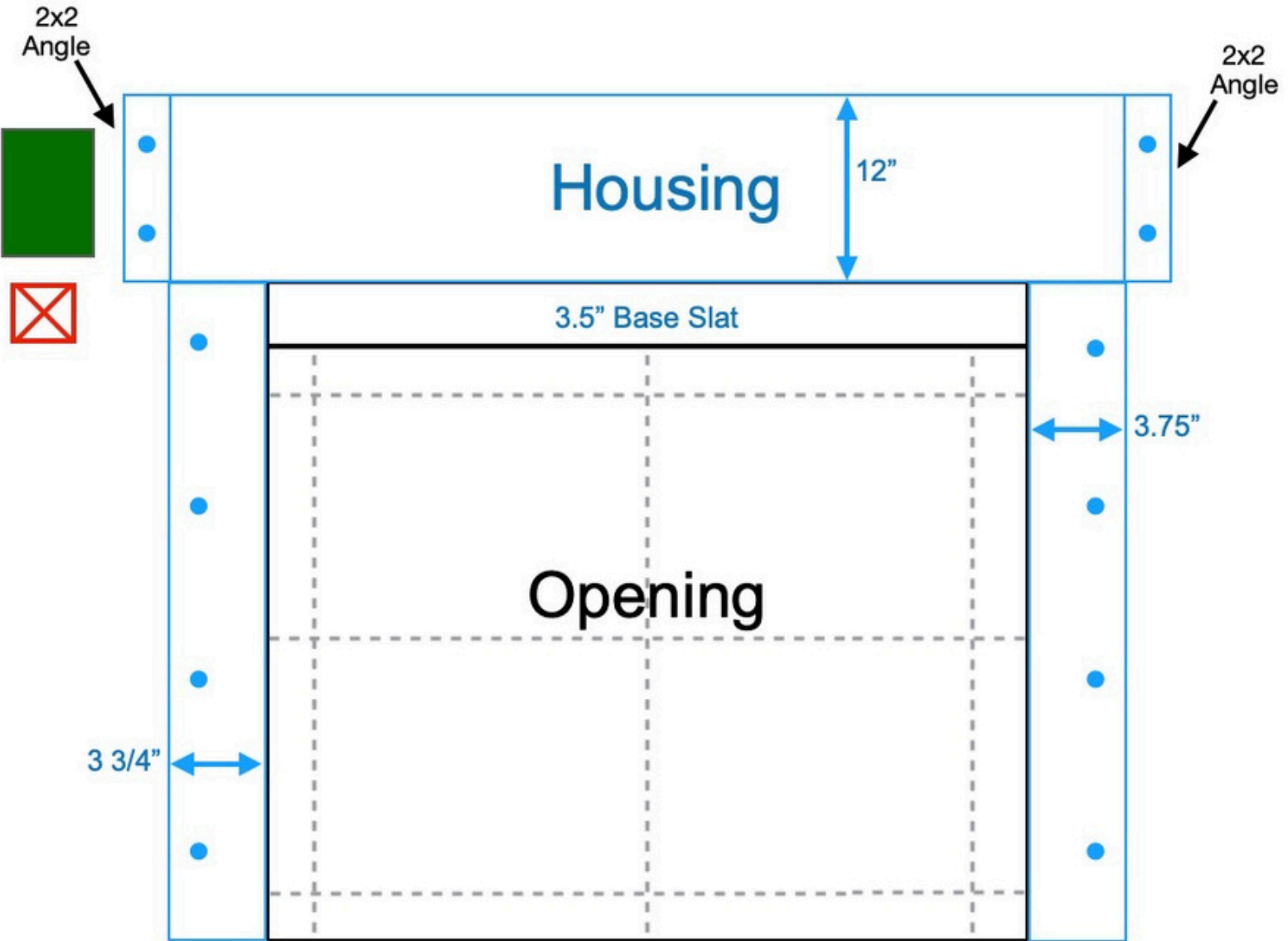
**C. Door Opening Width: \_\_\_\_\_ in.**

**D. Door Opening Height: \_\_\_\_\_ in.**

C & D is your finished opening size and the exact size your door will be. Measure for variances throughout the opening. If you want to be sure the rails clear the opening from the outside view, you can add to your width, considering you have the available space.

\*Single door orders come standard with 1 Single Wall, 1 Single Handheld & 1 Keychain.  
Multi door orders come standard with 1 Multi Wall, 1 Multi Handheld, and 1 keychain per door\*





● = Screws

■ = Receiver

--- = W x H Measurements

⊠ = Best spot for outlet 5" over, 1" up from opening

Blue = Garage Door Frame  
 Black = Opening  
 Rails = 3.75"  
 Housing = 12"  
 Base Slat = 3.5" / 3.125" slat with 3/8" rubber weatherstop  
**Preferred Head Room = 15.5"**

**NOTE:**

- We send product pre-drilled & with necessary screws
- We need 3 width x height measurements on the opening
- The power can be installed on either the right or left



## Exterior Shades Measuring Instructions

---

We receive a lot of requests for help with new construction projects. Site conditions vary dramatically on each project, and solutions for each project require careful planning.

---

### **TMAX Shades are ALL motorized!**

#### **FLOOR SLOPE**

TMAX shades have a 1" brush strip on bottom of shade. Openings with more than 3/4" variance may require other floor leveling techniques (by others). Or we can add a 2" brush.

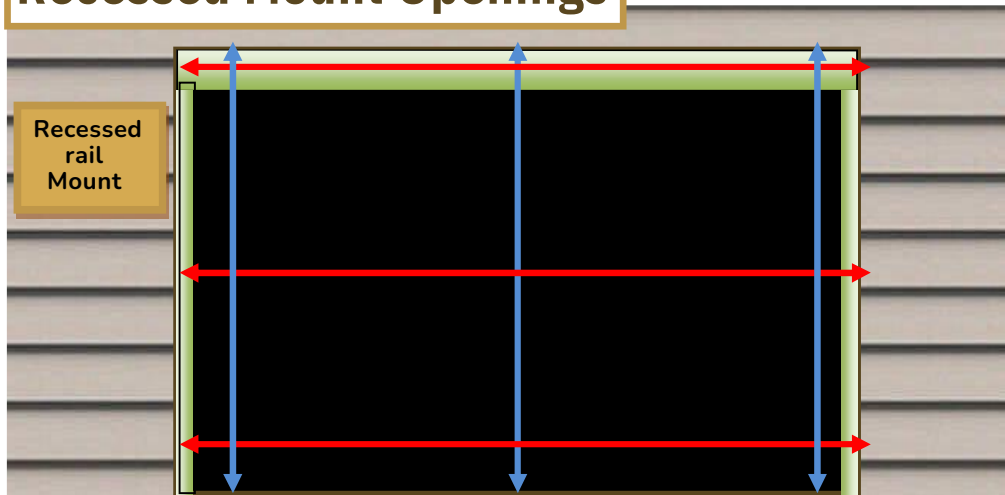
#### **NOTES**

- Installation details vary dramatically from project to project. Pay attention to shade access, clear opening height, side track mount, and electrical hook-up.
- Power side(motor side)
- Power cord will come out of the top of the box.



## Exterior Shades Measuring Instructions

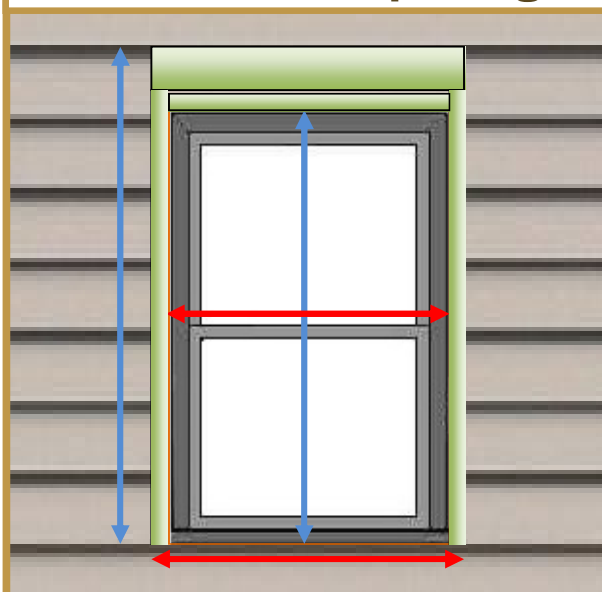
### Recessed Mount Openings



**BLUE** – Measure the **height** in three different spots inside the opening, both ends then middle, now pick the shortest height for your finished height of screen.

**RED** – Measure the **width** in three different spots inside the opening, both top and bottoms then middle, now pick the shortest width for your finished width of the screen.

### Surface Mount Openings



**BLUE** – Measure the **height** of the opening in the middle, and then add 8" to that measurement to acquire the finished height of screen.

**RED** – Measure the **width** of the opening in the middle, and then **add 2 1/4"** to each side of that measurement to acquire the finished width of the screen.

**Height = Add 7"**

**Width = Add 1 1/2" each side or 3" total**

Surface  
Rail Mount





*Let's get in touch*

3831 Pinemont Dr Houston, TX 77018

+1 (713) 772-9988

[www.TMAXRollUps.com](http://www.TMAXRollUps.com)

[Info@tmaxrollups.com](mailto:Info@tmaxrollups.com)